



Support for life

# The support service for the automotive industry

Glyn Fisher

Partnership Development Manager



# Ben has changed to ensure relevance to the industry and its people

## **Making a real difference**

We support the industry's most important asset: it's people, by providing tools and guidance to empower them to help themselves

## **A better tomorrow**

We're optimistic about the potential in people and the possibilities that change brings

## **The 'heart of the industry'**

We continually help its people and their families

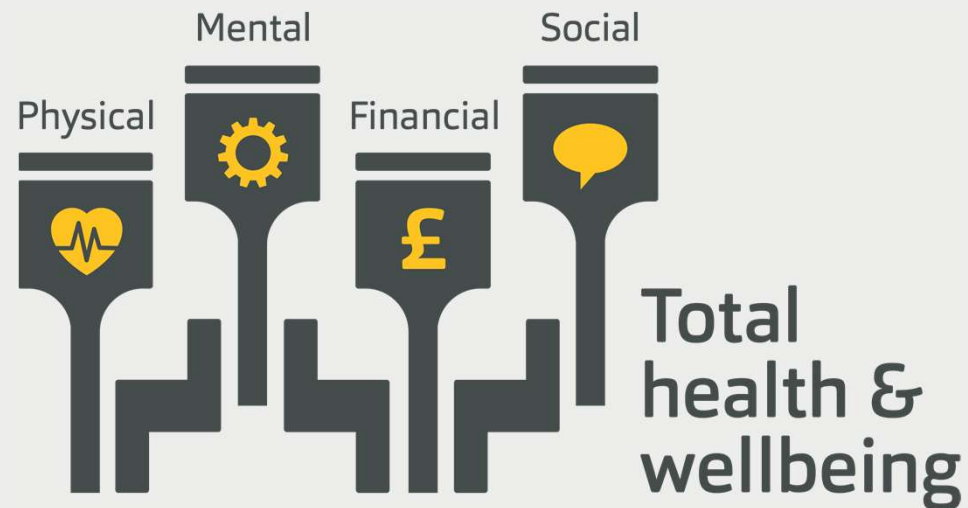
## **Enduring partnerships**

We're a trusted partner and an enduring friend, in good times and bad

## **Commercial with a small 'c'**

We're unafraid to be commercial and business-like

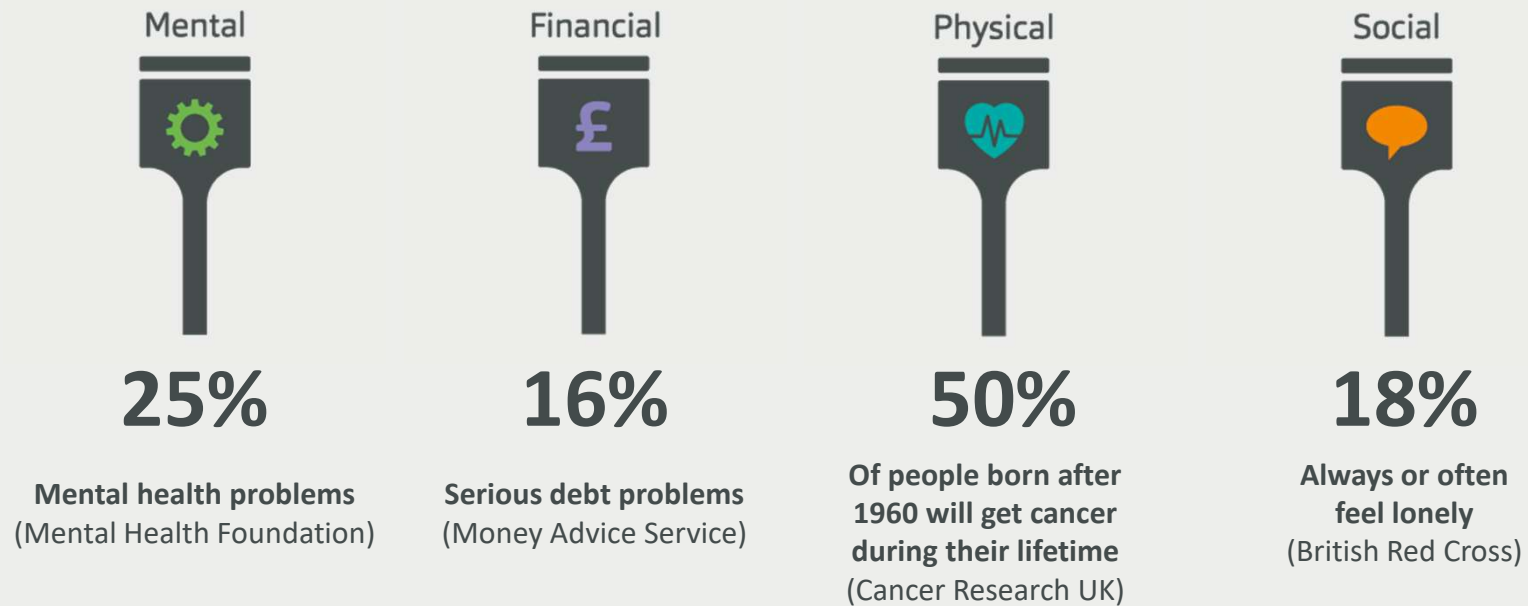
## We work with the industry to provide holistic care and support for life



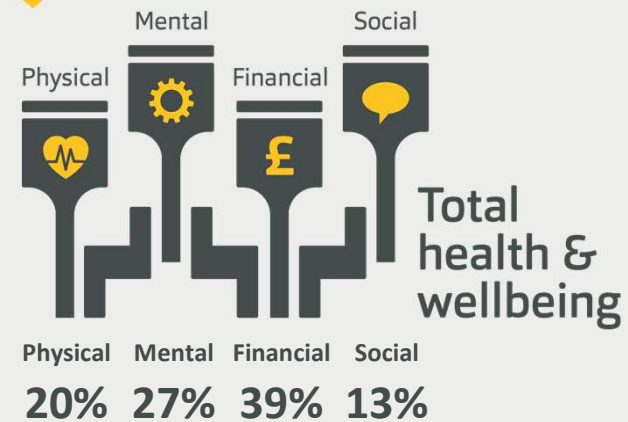
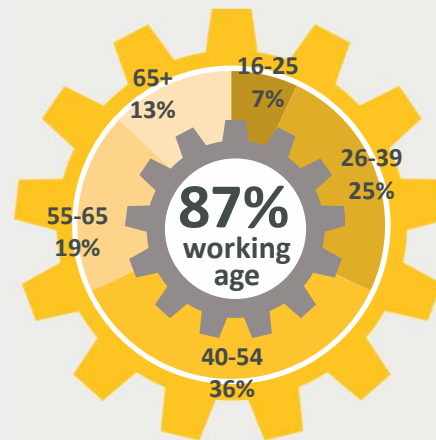
- We're an integral part of the automotive industry
- We provide support for life to employees and dependents
- We're a trusted partner for businesses, adding value
- We improve the health and wellbeing of the workforce

# The key issues affecting the UK population

2017/18



# Key stats from 2017/18



## Key stats



### Most common issues

- Anxiety
- Stress
- Depression
- Bereavement
- Low income
- Debt

# Ben4Business

A new approach to the way we partner with the automotive industry to support its people



BenAware



BenatWork



BenTraining



BackingBen

# Thank you

**Your support and advocacy  
helps us create a stronger  
UK automotive industry**